

ASTERION GX series lead-acid monoblocks are manufactured using GEL technology.

A composite gel is used as an electrolyte, which ensures deep discharge resistance and high temperature stability of **ASTERION GX** batteries. Designed for operation in both buffer and cyclic modes.

Scopes of application:

- Communication and telecommunication systems
- Uninterruptible power supplies
- Solar and wind power systems
- Autonomous power supply systems



Inert Gas Casting



Multicomponent inhibitors



Automated welding



Thermodynamic pressing



Electrolytic agents



GEL



Bulk application of active mass

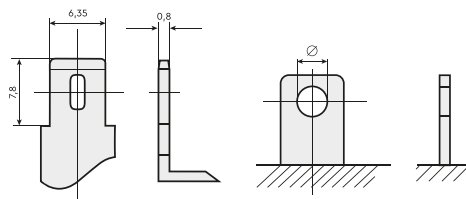


Advanced assembly technology



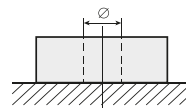
Service life	In buffer mode	15 years
	In cyclic mode	up to 60Ah – 1400 cycles at 30% over 65Ah – 2100 cycles at 30%
Self-discharge	Less than 3% per month	
Charging method	DC voltage charging	25°C
	Cyclic mode	2,25-2,3 V/cell Temperature compensation - 5 mV/cell°C
	Buffer mode	2,35 - 2,4 V/cell Temperature compensation - 3.3 mV/cell°C

Terminal diagrams



Knife F2

Bolt + nut

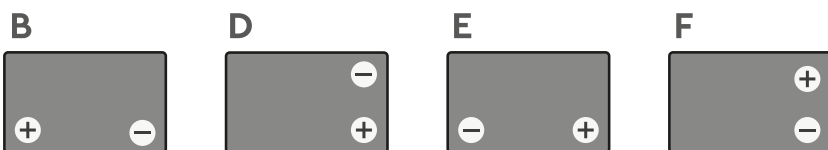


For bolt

Battery construction

Component	Positive plate	Negative plate	Container	Cover	Valve	Terminals	Separator	Electrolyte
Material	Lead dioxide	Lead	ABS	ABS	Rubber	Copper	Fiberglass	Sulfuric acid

Housing types



Standard sizes

Type	Voltage, V	Capacitance, Ah*	Length (±1), mm	Width (±1), mm	Height max (±1), mm	Weight, kg	Body	Terminal type
GX12-12	12	12	151	95	101	3.67	D	Knife F2
GX12-17	12	17	181	77	167	5.5	E	Bolt + nut ∅ 5.5 mm
GX12-24	12	24	166	175	125	8.3	E	For M5 bolt
GX12-33	12	33	195	130	180	11	B	For M6 bolt
GX12-40	12	40	197	165	170	14.7	E	For M6 bolt
GX12-45	12	45	197	165	170	14.6	E	For M6 bolt
GX12-55	12	55	239	132	210	17.3	B	For M6 bolt
GX12-60	12	60	258	166	235	23	B	For M6 bolt
GX12-65	12	65	350	167	183	23.4	B	For M6 bolt
GX12-75	12	75	258	166	215	23.5	B	For M6 bolt
GX12-80	12	80	350	167	183	24	B	For M6 bolt
GX12-90	12	90**	306	169	215	30	B	For M6 bolt
GX12-100	12	100**	330	171	220	32	B	For M6 bolt
GX12-120	12	120**	410	176	224	38	B	For M8 bolt
GX12-150	12	150**	482	170	240	47	B	For M8 bolt
GX12-200	12	200**	522	238	227	65	F	For M8 bolt
GX12-230	12	230*	520	269	208	72.6	F	For M8 bolt

*Capacitance is indicated at the 20-hour discharge.

**Capacitance is indicated at the 10-hour discharge.